

**TB 141**

## TECHNICAL BULLETIN

**INFORMATION ONLY**

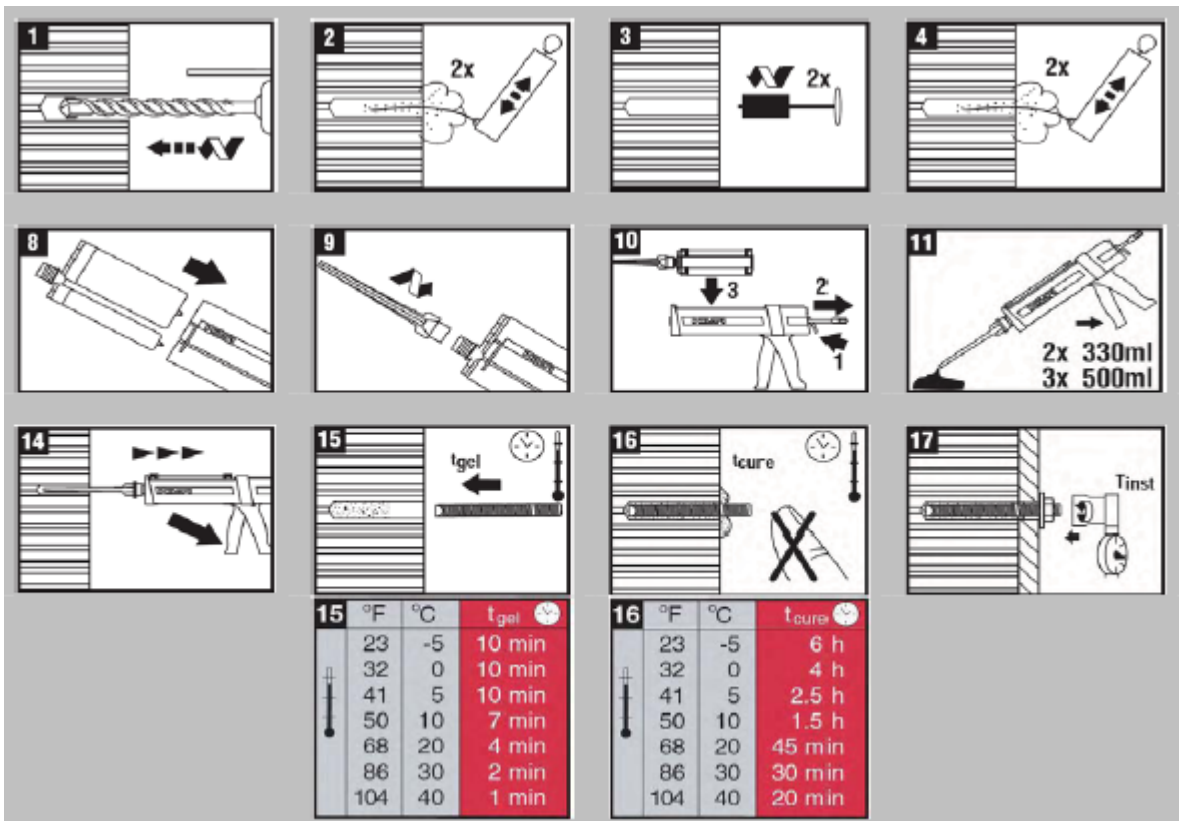
**For the Attention of :** Installers, Training Dept  
**Date :** 28.03.2013  
**Product :** Maxilift, Midilift  
**Subject :** Torque settings for chemical resin anchors (HY 70)  
**Pages :** 3

**Originator :** Stannah Lifts Ltd, Anton Mill, Andover, Hants SP10 2NX 01264 339090

This document relates to both Midilift and Maxilift products that require fixing back to a supporting wall made of either aerated or hollow blocks. For supporting walls made of concrete please refer to TB142.

### Detail

Follow the correct procedure for drilling, cleaning and setting the anchor in the supporting wall, as instructed in the information booklet provided with the Chemical resin (Fig.1)

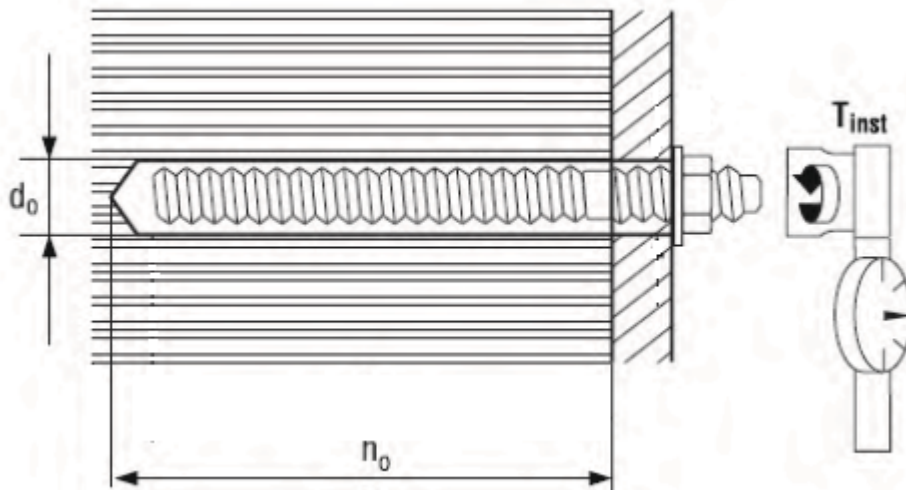


\*Note: images 5, 6, 7, 12 & 13 Omitted

**Fig.1**

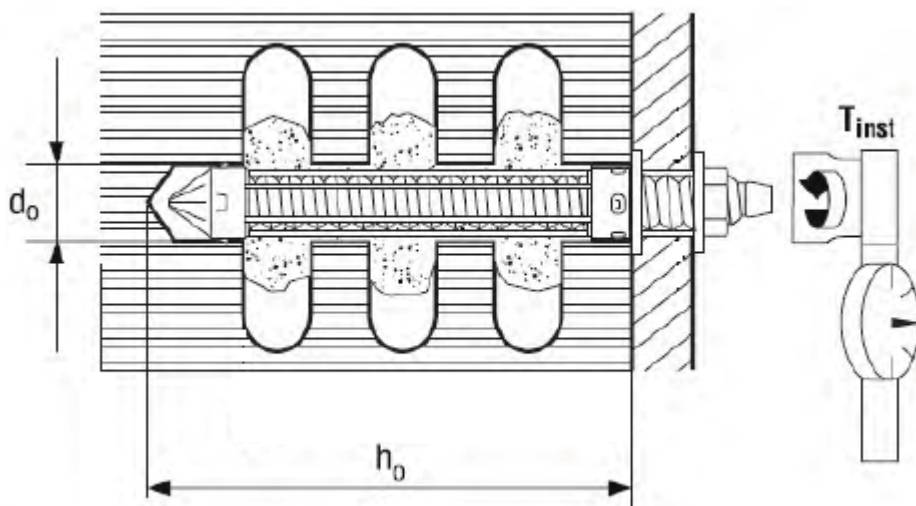
Once the resin has been given adequate time to cure, use the following tables to select the correct torque for the anchor.

## Aerated Blocks:



Anchor Size	M10	M12
Nominal Drill diameter ( $d_0$ )	12mm	14mm
Drill Depth ( $n_0$ )	90mm	90mm
Max Tightening Torque ( $T_{inst}$ )	8Nm	10Nm

## Hollow Blocks:



Anchor Size	M10	M12
Nominal Drill diameter ( $d_0$ )	16mm	18mm
Drill Depth ( $n_0$ )	90mm	90mm
Max Tightening Torque ( $T_{inst}$ )	4Nm	6Nm



# Stannah

## **Summary**

The information set out in this document is provided to ensure the chemical resin anchors, used to support the imposed loads generated by the lift, are set to the correct torque as indicated by Hilti.

Note: this information is for guidance only, for more detailed and up to date information please refer to the information booklet provided with the chemical resin.

## **References:**

Hilti, September 2012, Hilti HIT HY70 Injection Mortar - [http://www.hilti.co.uk/fstore/holuk/techlib/docs/HY70\\_2.pdf](http://www.hilti.co.uk/fstore/holuk/techlib/docs/HY70_2.pdf)